



PS-2.7/85

Low Frequency Geophone

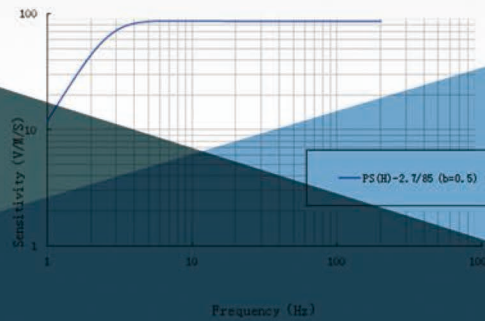
PS-2.7/85 geophone is a kind of low frequency geophone developed following request of seismic exploration and engineering which is mainly to receive deep level, low frequency and weak signal. It can be used as single point and also 3-component

- Low Frequency: 2.7 Hz
- High SNR and wide dynamic range
- Low distortion

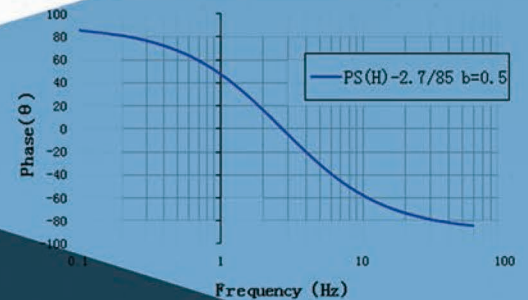
Parameter\Mode	PS-2.7/85 (20°C)
Natural frequency (Hz)	2.7±20%
Sensitivity (V/m/s)	85±10%
Damping	0.5±20%
Spurious Frequency	≥ 150
Coil Resistance(Ω)	6300±10%
Moving Mass (g)	8.5
Max. Coil Excursion(mm)	2.54
Distortion (%)	≤0.3
Dimensions (mm)	30.2×39.9
Temperature range (°C)	-40~+80
Warranty Period (Year)	1
Weight (g)	142



RESPONSE CURVE



PHASE-FREQUENCY RESPONSE CURVE



Cable & Supplies, Inc.
 1115 Staffordshire Rd.
 Stafford, TX 77477 USA
 Tel: 281.741.2295
 Fax: 281.741.2829

E-mail: Jeff.buis@csicablessupplies.com

www.csicablessupplies.com